

POWER DOOR LOCK CONTROL SYSTEM

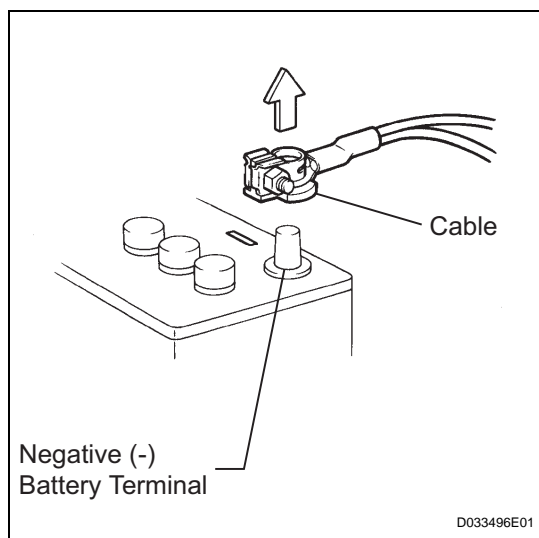
PRECAUTION

1. DISCONNECT AND RECONNECT CABLE OF NEGATIVE BATTERY TERMINAL

NOTICE:

When disconnecting the cable from the negative (-) battery terminal, initialize the following systems after the cable is reconnected.

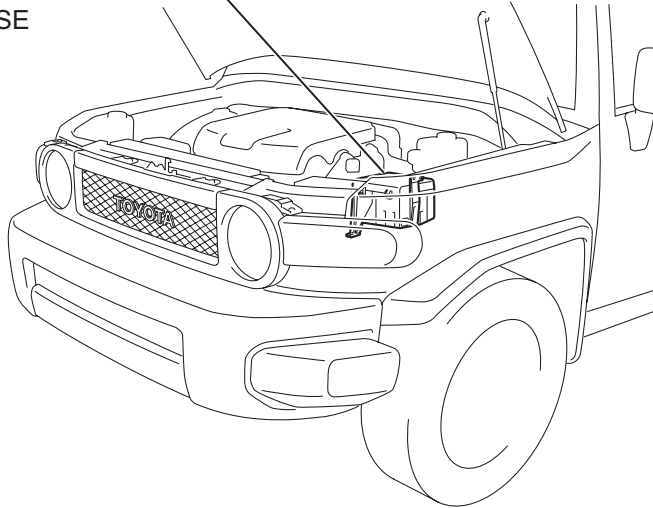
System Name	See procedure
METER / GAUGE SYSTEM	See page ME-10



- (a) Before performing electronic work, disconnect the cable from the negative (-) battery terminal in order to prevent it from shorting and burning out.
- (b) Before disconnecting and reconnecting the battery cable, turn the ignition switch OFF and the headlight dimmer switch OFF. Then loosen the terminal nut completely. Do not damage the cable or terminal.
- (c) When the battery cable is disconnected, the clock and radio settings and stored DTCs are erased. Therefore, before disconnecting the battery cable, make a notes of them.

PARTS LOCATION

ENGINE ROOM R/B NO. 2
- ECU-B FUSE



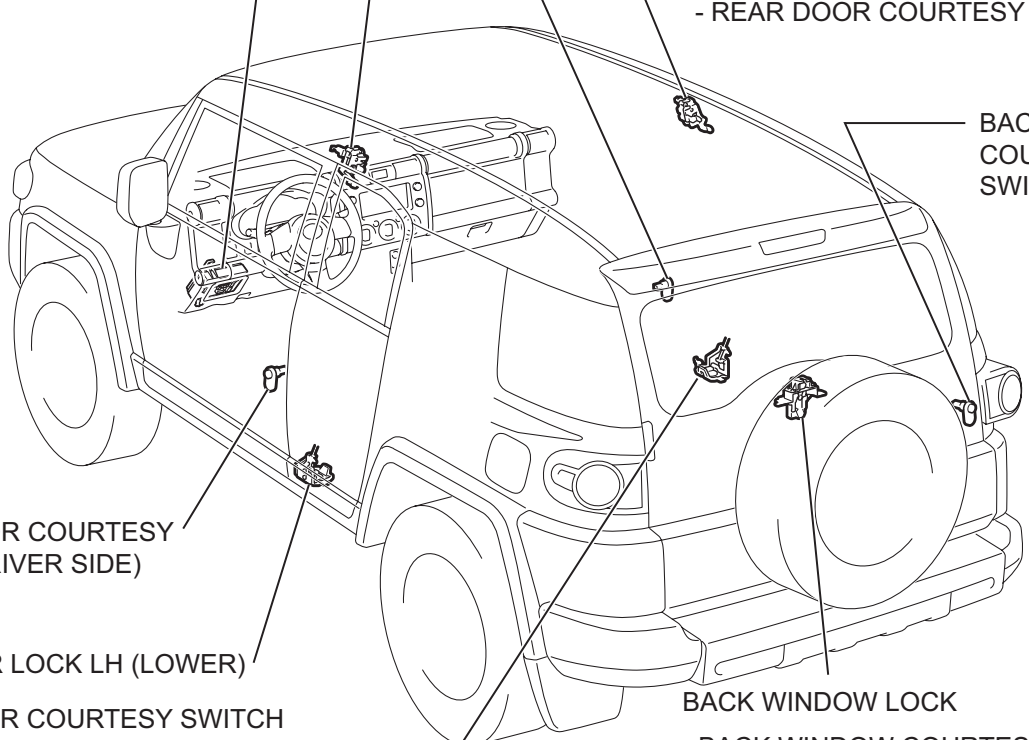
REAR DOOR LOCK LH (UPPER)
- REAR DOOR COURTESY SWITCH

MAIN BODY ECU
(DRIVER SIDE J/B)

FRONT DOOR COURTESY SWITCH
(PASSENGER SIDE)

REAR DOOR LOCK RH (UPPER)
- REAR DOOR COURTESY SWITCH

BACK DOOR
COURTESY
SWITCH



FRONT DOOR COURTESY
SWITCH (DRIVER SIDE)

REAR DOOR LOCK LH (LOWER)
- REAR DOOR COURTESY SWITCH

BACK WINDOW LOCK
- BACK WINDOW COURTESY SWITCH

REAR DOOR LOCK RH (LOWER)
- REAR DOOR COURTESY SWITCH

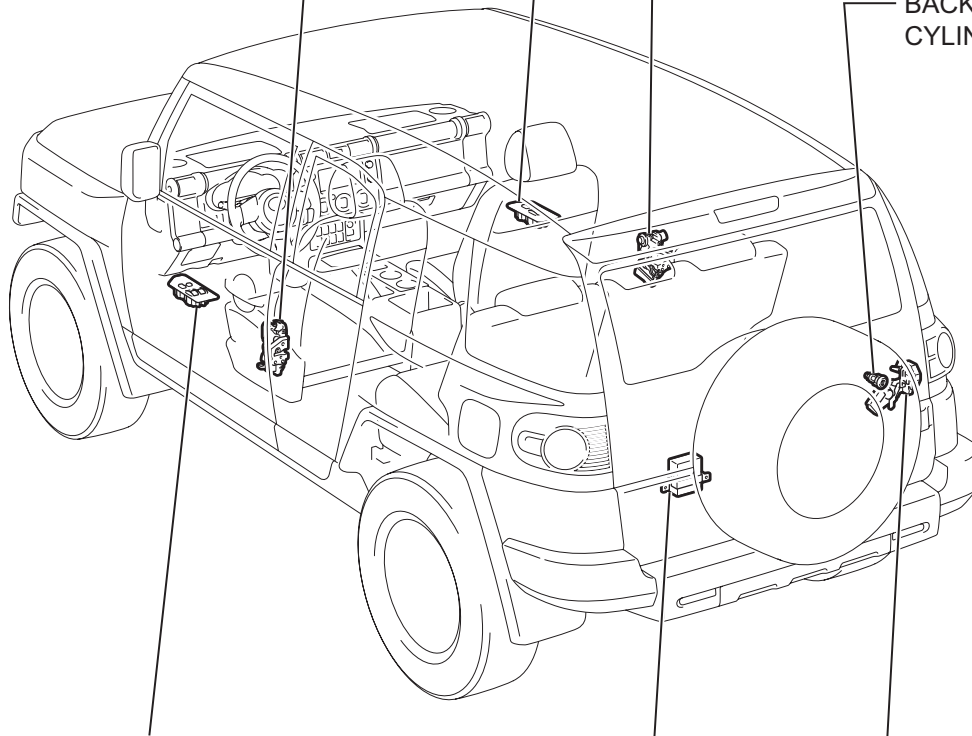
DL

DOOR CONTROL SWITCH (PASSENGER SIDE)

FRONT DOOR LOCK ASSEMBLY
(FRONT PASSENGER SIDE)

FRONT DOOR LOCK
ASSEMBLY(DRIVER SIDE)

BACK DOOR LOCK
CYLINDER



POWER WINDOW REGULATOR MASTER SWITCH

- DOOR CONTROL SWITCH

BACK DOOR LOCK ASSEMBLY

BACK DOOR ECU

DL